

INVESTORS PRESENTATION

14th APRIL 2026, FRANKFURT

MIDCAP EVENT





EDGELAB AT GLANCE

Stefano Bartelloni, CFO



AUV: The Challenge

Q: how many
persons had
reached Moon
surface?

A: 12



AUV: The Challenge

**Q: and how many
had touched the
deepest
Marianne's
Trench
ocean seafloor?**

A: only 4 !



AUV: The Challenge

Why? Because sea is an harsh environment

- dark
- corrosive
- low temperature
- high depth



AUV: Autonomous Underwater Vehicles

Ocean exploration requires reliable and affordable means



EDGE LAB

Auv, Sea Technology and Sensors

AUV: The Market Opportunity

A new approach is needed
The example of drones: a paradigm shift



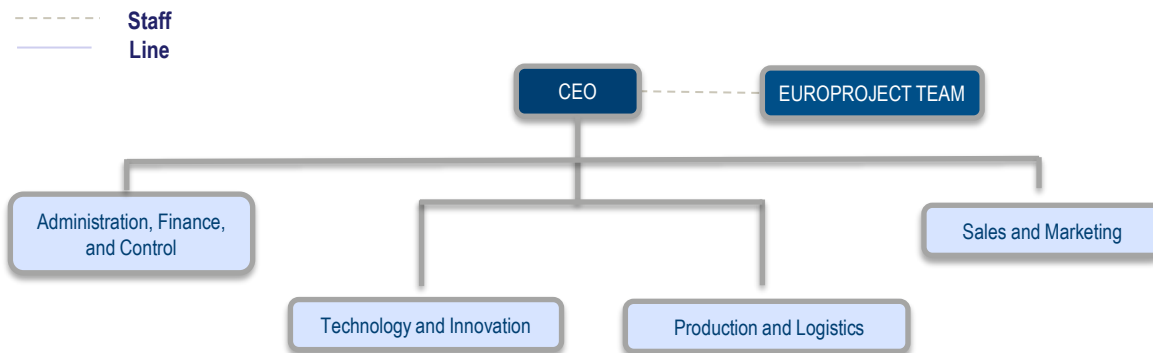
CORPORATE STRUCTURE, GOVERNANCE AND ORGANIZATIONAL CHART

Corporate Structure

Edgelab S.p.A. is majority owned by Planasia Holding S.r.l. (65% of the share capital), a holding company wholly owned by Michele Cocco. The remaining shares are held by KSSL (25%) and the market (10%).

Shareholder	% of Share Capital	%of voting rights
Planasia Holding S.r.l.	65%	72,2%
KSSL	25%	19,8%
Market	10%	7,9%
Total	100%	100%

Organisational Chart



Corporate Governance

The Company is managed by a Board of Directors composed of 5 members serving a three-year term.

Members Of The Board Of Directors	Role
Michele Cocco	Chairman of the BOD
Emmanuele Mastagni	Board member
Antonio Scisciolo	Board member
Neelesh Vijay Tungar	Board member
Bertolo Nardini	Independent board member

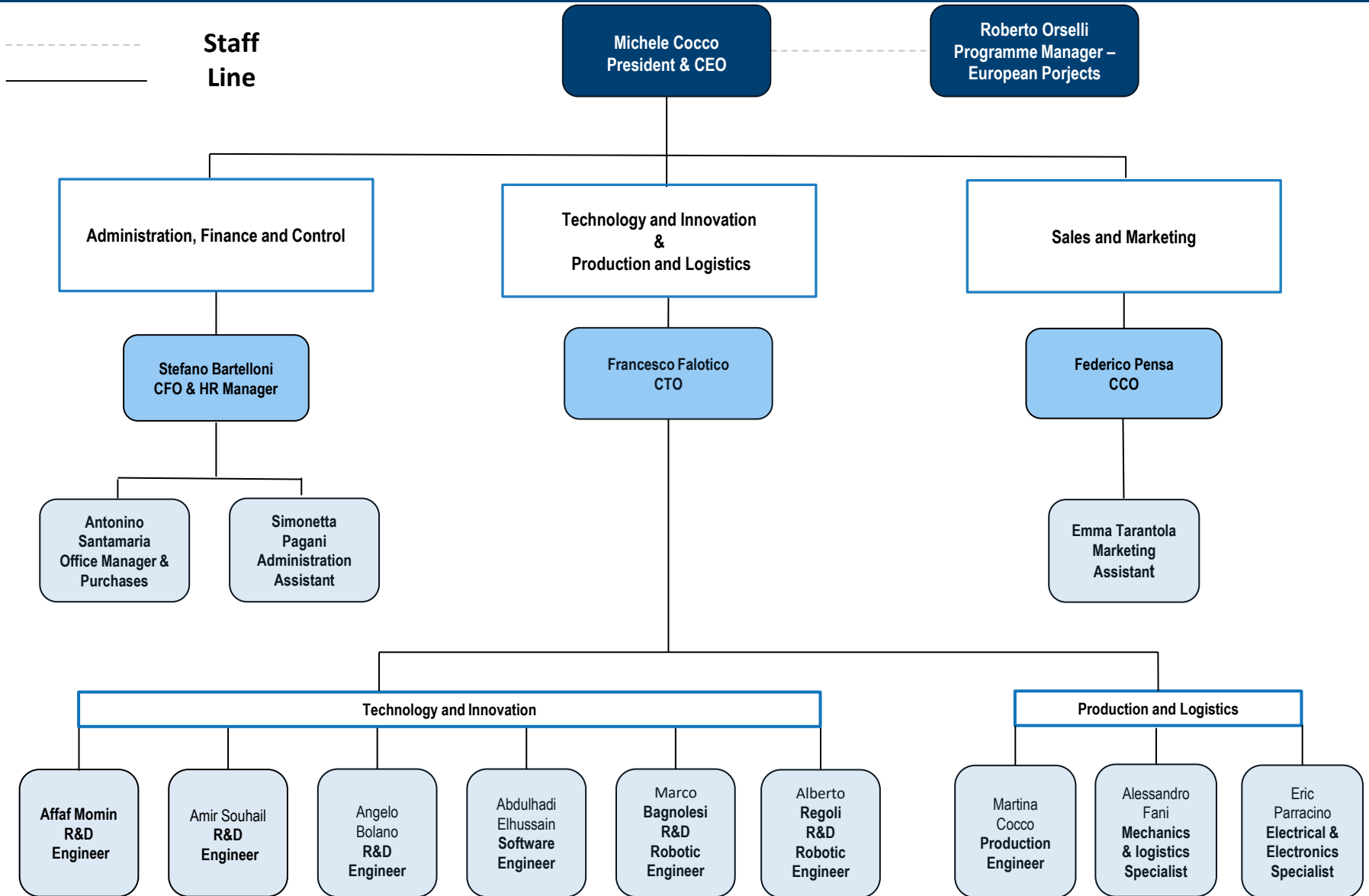
The Board of Statutory Auditors will serve a three-year term and is composed of 3 members.

Members Of The Board Of Statutory Auditors	Role
Adriana De Col	Chairman
Alessandro Signorini	Standing auditor
Alessandra Geri	Standing auditor

The legal audit is entrusted to the company NEXIA AUDIREVI for a duration of three years.



ORGANIZATIONAL CHART





Michele Cocco, CEO

- Degree in Physics, PhD in Industrial Engineering from Scuola Superiore S. Anna, Pisa
- Over 20 years of experience in sensors and marine technologies
- Experience in scientific and managerial management



Federico Pensa, CCO

- Degree in Economics and MBA
- Over 20 years of experience in Sales, Marketing, and After-sales internationally (over 50 countries) working in Automotive and Capital Goods companies
- Over 5 years of experience as a consultant in digital transformation, IoT, and digital marketing



Francesco Falotico, CTO

- Degree in Electronic Engineering, specializing in biomechatronics
- Over 10 years of experience in R&D working for the Biorobotics Institute, Scuola Superiore S. Anna (Pisa)
- Expert in programmable electronic systems (FPGA programmable logic circuits)



Stefano Bartelloni, CFO

- Degree in Economics and Master's in Accounting, Auditing, and Control from Bocconi University, Milan
- A decade of experience in strategy and data analysis, financial reporting, and KPI-driven strategy

EDGE LAB AT A GLANCE

COMPANY SNAPSHOT

- **Founded:** 2010, Portoferraio (LI)
- **HQ:** La Spezia, Italy
- **Innovative SME**, registered in the Special Section of the Chamber of Commerce
- **Focus:** Autonomous Underwater Vehicles (AUVs)

MARINE TECHNOLOGIES FOR:



Scientific
Research



Underwater
Archaeology



Offshore



Defense and
Security

2025: MILESTONES

- **MIn €5,2+** invested in R&D (2012–2025)
- Team of **18** (73% STEM, PhD, MBA)
- Successful **conclusion of the M.A.R.E. project**
- **Signed strategic agreement with KSSL** to strengthen international cooperation
- **Participated** in the **sixth edition of “Next Gems”** at Borsa Italiana
- **Delivered U_Tracker®** to the **Sicilian Region**

TRACK RECORD

- ✓ Supplier to **Italian and international government** institutions
- ✓ **Over 10 years** in underwater tech
- ✓ Among the **first movers** in the small AUV

MAIN CUSTOMERS



EDGE LAB

Auv, Sea Technology and Sensors

THE HISTORY OF THE COMPANY

R&D and 1° prototypes (2012-2015)

Testing (2016-2018)

3rd phase - Production and International commercial expansion (2018-2026)

2010

Establishment of **Edgelab**: auvs, underwater robotics, marine technologies and sensors.

2013

U_Tracker II generation. **TRL 4-5.**



2020

Acquisition of new grant: **Horizon 2020 Nautilus.**

2022

Project USV_CAT-Autonomous guided Catamaran. **TRL 6.**



Improved the decision-making autonomy of AUVs with AI.

2024

Acquisition of new grants **R&S: FESR Smarty Mtcom, M.A.R.E..**

Transition to a **joint-stock company** and listing on **Euronext Growth Milan.**



2025

Delivered **U_Tracker®** to the **Sicilian Region.**

Obtaining **ISO 9001 quality certification.**



Signed **strategic agreement** with **KSSL.**

Conclusion of **M.A.R.E.** project.

2012

Start manufacturing the 1st prototype of **U_Tracker. TRL 4.**



2017



U_Tracker III generation. **TRL 6-7.**

Start of **U_Deep AMOGH programme**, in collaboration with **Larsen & Toubro (India).**

2021

Start of small series production **U_Tracker. TRL 9.**

Demo and test phase completed - U_Deep AMOGH. TRL 6-7.

Start of programmes **EUT e MTE. TRL 8 reached in 2024.**

2023



Acquisition of new grants; **Horizon Europe Thetida, Leviatad.**

Development of **U_Tracker IV generation**

Strategic Alliance with **Larsen & Toubro**, continuation of Amogh Programme.

2026

EdgeLab S.p.A. announces the **official conclusion of the AUTOMA.**

MTCOM Project Sea Trials Successfully Completed at the Port of La Spezia.



EdgeLab S.p.A. Signs Strategic Agreement in Poland with **Turrim Sp. z o.o.**



EDGE LAB

Auv, Sea Technology and Sensors

TECHNICAL SKILLS

SIGNAL ANALISYS

- Computer vision algorithms
- 2D visual and 3D acoustic classifiers;

ARTIFICIAL INTELLIGENCE

- Navigation and control system guided by AI tools
- At the individual level: implementation of adaptive techniques;
- Fleet-wide: strategic coordination for cooperative missions

UNDERWATER ACOUSTICS

- Underwater communications:
- Proprietary algorithms for:
 - 1) underwater target simulation,
 - 2) noise estimation and suppression



NAVIGATION, GUIDANCE & CONTROL

- SW navigation suite, guidance and autonomous control, Obstacle Avoidance SW
- Wi-Fi, RF, LTE GPRS, satellite and acoustic communication suite.



EDGELAB: THE TEAM

HARDWARE



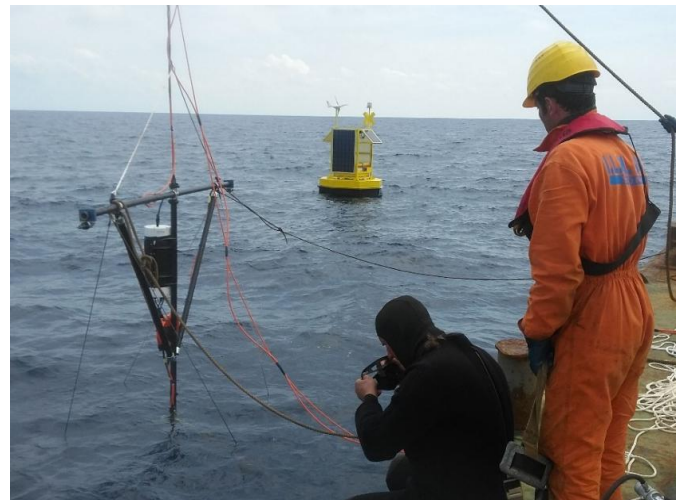
SOFTWARE



MECHANICS



TEST



EDGE LAB: SEA OPERATIONS



EDGE LAB'S PRODUCTS

Federico Pensa, CCO



PRODUCT OVERVIEW

- RUT – Recoverable Underwater Target*
- EUT – Expendable Underwater Targets
- MTE – Mobile Target Effector
- U_DEEP – Large, dependable, high-performance AUV
- EL-CAT – Unmanned Surface Vehicle
- U_TRACKER IV – Man-portable, Entry-level AUV
- U_TRACKER PRO – Man-portable, Professional AUV*
- U_TRACKER L – Man-portable, Hi-end AUV*

*NEW 2026 PRODUCTS



RUT – Recoverable Underwater Target

Recoverable underwater target based on the U_Tracker IV platform

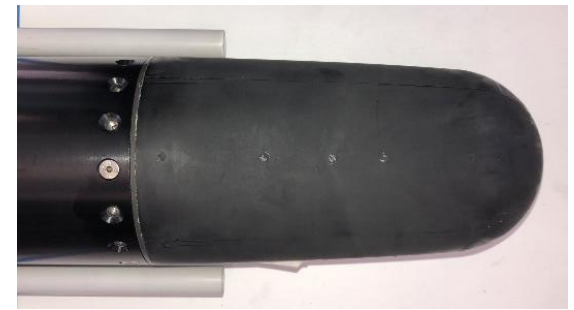
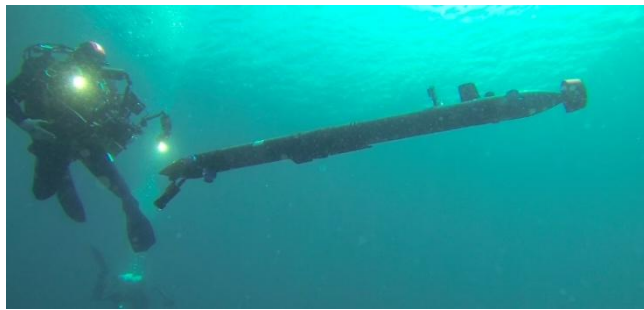
DEFENCE / TRAINING

TECHNICAL SPECIFICATIONS

- Length: 1.9 – 2.3 m | Diameter: 0.16 m
- Weight: ~25 kg (air) | Buoyancy: +1 kg
- Max speed: 8 knots | Cruise: 3 knots
- Endurance: 4 hrs | Depth: 300 m
- Propulsion: 1 propeller + 4 thrusters
- Li-Ion batteries (recharge: 3–6 hrs)
- Reconditioning time: 20 min – 3 hrs

KEY FEATURES

- Active echo repeater: 1.5 – 35 kHz
- Passive tone emission: 200 Hz – 10 kHz (140 dB)
- Programmable broadband noise
- Combined passive/active mode
- Remote control via Wi-Fi, RF, GPS
- Autonomous waypoint navigation
- JDeMoN GUI + dedicated GCS
- Net recovery system up to Sea State 3



EUT – Expendable Underwater Targets

Expendable underwater targets for sonar operator training

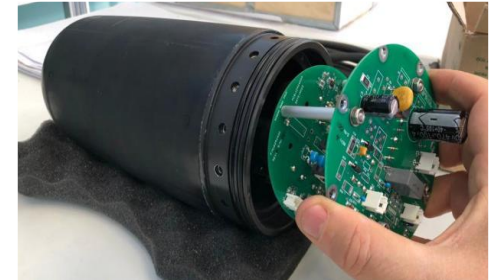
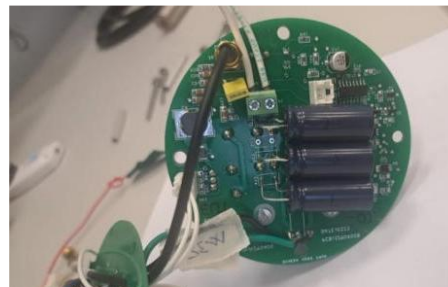
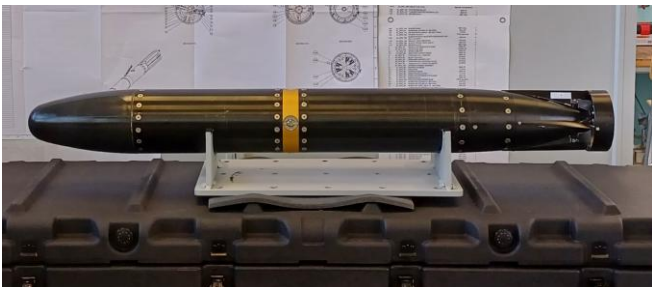
TRAINING

TECHNICAL SPECIFICATIONS

- Length: ~1 m | Diameter: 12 cm ("A" size)
- Weight: < 15 kg
- Speed: 3 – 8 knots (programmable)
- Operating depth: up to 150 m (MOD 300 m)
- Endurance: ~4 hours
- Propulsion: 1 brushless motor + rudder/elevators
- Source level: > 120 dB
- Managed via dedicated GUI software

KEY FEATURES

- Echo repeater: 1.5 – 35 kHz
- Tonal signals: 100 – 2,000 Hz
- Broadband noise emission
- Autonomous evasive manoeuvres
- Automatic response to sonar detection
- Realistic submarine acoustic signature
- Programmable trajectories
- Passive, active and combined modes



EDGE LAB

Auv, Sea Technology and Sensors

MTE – MOBILE TARGET EFFECTOR

Acoustic decoy for anti-torpedo countermeasure systems

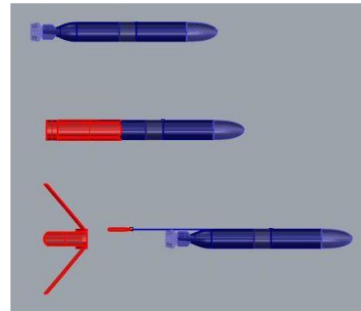
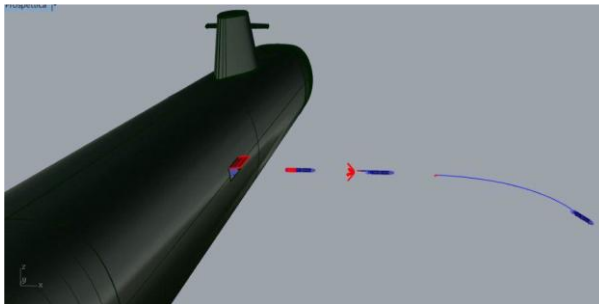
COUNTERMEASURES

TECHNICAL SPECIFICATIONS

- Length: < 1.4 m
- Weight: < 15 kg
- Operating depth: 300 m

KEY FEATURES

- Emit acoustic signatures to confuse or deceive torpedoes.
- Replicate the trace of a submarine, ship, or UUV (target).
- Create false contacts for tactical scenarios.
- Reactive behavior to sonar and torpedo signals



EDGE LAB

Auv, Sea Technology and Sensors

U_DEEP – HEAVY INSPECTION AUV

Heavy-class AUV for deep-water survey, inspection and defence operations

INSPECTION / DEFENCE

TECHNICAL SPECIFICATIONS

- Length: 6 m | Diameter: 0.75 m
- Weight: ~1,500 kg (air) | Buoyancy: +3 – 10 kg
- Max speed: 6 knots | Cruise: 3 knots
- Endurance: 24 hours
- Operating depth: 1,000 / 3,000 m
- Comms: Radio, Wi-Fi, UW acoustic, Satellite
- Dedicated LARS (air-conditioned container)
- GCS: 21.5" Full HD display, 12 hrs autonomy

KEY FEATURES

- MBES – MultiBeam EchoSounder
- SAS/SSS – Synthetic Aperture Side Scan Sonar
- Sub Bottom Profiler (SBP)
- CTD – multiparametric probe
- GPS, seabed-following and INS navigation
- Hydrographic and environmental survey
- MCM, ISR and harbour protection
- Debris mapping, search and rescue support



EDGE LAB

Auv, Sea Technology and Sensors

EL-CAT – UNMANNED SURFACE VEHICLE (USV)

Catamaran USV for survey, surveillance and autonomous maritime operations

SURFACE / USV

TECHNICAL SPECIFICATIONS

- Dimensions: 1,800 × 1,450 × 2,400 mm
- Weight: 120 kg
- Max speed: 4 knots | Survey: 2 knots
- Endurance: 12 hrs at survey speed
- Propulsion: T200 Blue Robotics (differential drive)
- Comms: Long-range Wi-Fi, LTE, Satellite
- Positioning: GPS/GLONASS
- GCS: 21.5" display, 12 hrs autonomy

KEY FEATURES

- Wide-angle + underwater camera
- SSS, MBES, acoustic sensors
- Full HD FT/IR turret camera
- Remote-controlled and autonomous modes
- Collapsible stainless-steel rollbar
- Dual independent battery system
- AUV/ROV mothership capability
- Environmental monitoring and MCM support



EDGE LAB

Auv, Sea Technology and Sensors

U_TRACKER IV

Modular compact AUV for university research, underwater archaeology and monitoring

RESEARCH / UNIVERSITY

TECHNICAL SPECIFICATIONS

- Length: ~2.2 m | Diameter: 0.16 m
- Weight: ~20 kg (air) | Buoyancy: +1 kg
- Max speed: 5 knots | Cruise: 3 knots
- Endurance: 8 hours
- Max depth: 300 m
- Propulsion: 1 propeller + 4 thrusters
- Rechargeable Li-Po batteries
- Control: long-range RF + Wi-Fi

KEY FEATURES

- 5 DoF control: hovering and point rotation
- Fixed Depth and Terrain Following navigation
- Autonomous waypoint navigation
- Optional USBL and DVL
- Optional SSS and HD camera
- Low magnetic signature (composite hull)
- Low-noise design (oil-immersed components)
- Target market: universities, R&D, UW archaeology



U_TRACKER PRO

Professional AUV for commercial diving, offshore inspection and survey

COMMERCIAL / DIVING

TECHNICAL SPECIFICATIONS

- Length: 2.1 – 2.2 m | Diameter: 0.16 m
- Weight: ~25 kg (air) | Buoyancy: +1 kg
- Max speed: 5 knots | Cruise: 3 knots
- Endurance: 8 hours
- Max depth: 300 m

KEY FEATURES

- INS-FOG: Phins C3 Compact
- DVL: WaterLinked A125
- USBL: SeaTrac X150
- SSS/MBES: Ping 3DSS
- Camera: 5MP + LED lighting
- Obstacle Avoidance: Tritech Micron DST
- Sound Velocity Profiler (Valeport OEM)
- 5 DoF control: hovering and point rotation
- Fixed Depth and Terrain Following navigation
- Low magnetic signature (composite hull)
- Target market: commercial diving, offshore inspection



EDGE LAB

Auv, Sea Technology and Sensors

U_TRACKER L

Large-class AUV for defence, MCM, ISR and deep-water survey operations

DEFENCE / SURVEY

TECHNICAL SPECIFICATIONS

- Length: 3.6 – 3.7 m | Diameter: 0.25 m
- Weight: ~110 kg (air) | Buoyancy: +1 kg
- Max speed: 5 knots | Cruise: 3 knots
- Endurance: 10 hours
- Max depth: 1,000 m
- Propulsion: 1 propeller + 4 thrusters

KEY FEATURES

- INS-FOG: Phins C9 Compact
- DVL: Nortek DVL 500 Compact
- SSS/MBES: EdgeTech 2025
- Camera: Voyis Observer 12MP + LED strobe
- USBL: EvoLogics S2C M 18-34
- Obstacle Avoidance: Blueprint Oculus MT-750D
- Sub Bottom Profiler, Magnetometer, CTD
- 5 DoF control: hovering and point rotation
- Low magnetic signature (composite hull)
- Manual RHIB launch or optional LARS



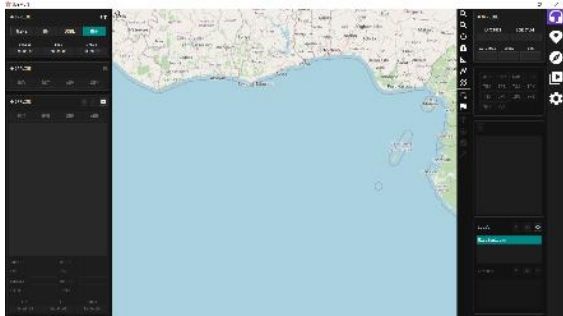


GUI & CGS

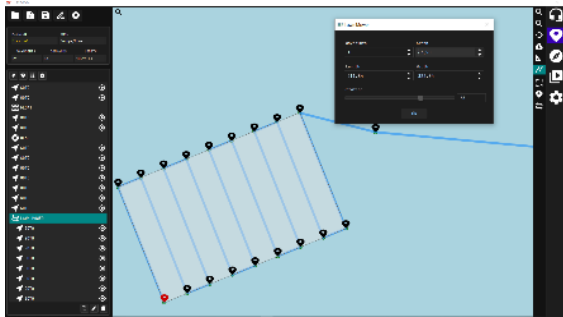
Federico Pensa, CCO



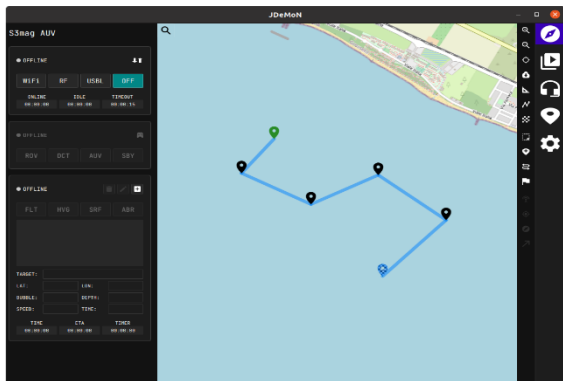
GRAPHIC USER INTERFACE



Mission planning, monitoring (optional), and post-mission analysis with integrated chart overlays.



Configuration of RF settings and, if required, the Acoustic Data Link for vehicle communication.



Mission management system (mms) capabilities.



GROUND CONTROL STATION



PRODUCT DESCRIPTION

The EdgeLab Ground Control Station (GCS) is a cutting-edge command and monitoring system designed for the seamless operation of autonomous underwater vehicles (AUVs) and unmanned surface vehicles (USVs). It provides operators with a centralized interface for mission planning, real-time supervision, and post-mission data analysis.

MAIN FEATURES

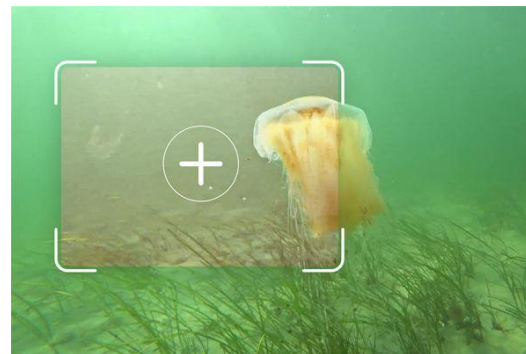
- **Autonomy:** 12 hours, extendable. Rechargeable from outside.
- **Communications:** Long-range Wi-Fi connection.
- **Operations:** Comprehensive management software for AUV and USV vehicles.
- **Remote manoeuvrings cloche** with 19 mappable buttons.
- **Vehicle location** plotted on assignable tile map.
- **Real-time feedback** from multiple HD cameras.
- **Depth monitoring.**
- **Battery status.**
- **Command, control, and communication:**
 1. Long-range Wi-Fi
 2. LTE
 3. Rock Block satellite modem



THE INNOVATION ADVANTAGE:

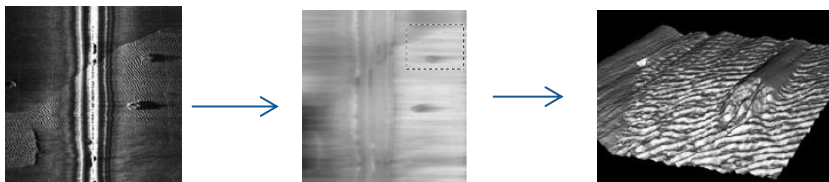
1) Computer Vision 3D Scene Analysis & Recognition

- Vision-based control of AUV navigation
- Anomaly classification
- Target mosaicking and mapping
- SLAM computer vision (either passive or active triangulation techniques)
- On-board sensory data analysis
- 2D Visual & 3D Acoustic Classifiers
- Swarm 3D Object Recognition



2) Machine learning-based optical-acoustic data fusion (cont.d)

Algorithms for 3D reconstruction – shape from shading
Example: Archaeological experimental site (Isle of Elba)

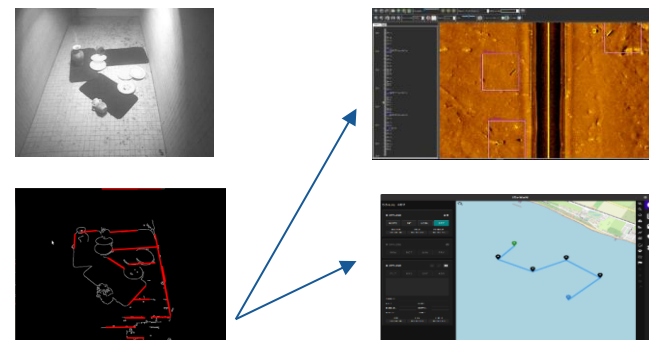


Automatic target detection (amphora) by both sonar and acoustic imaging



3) Sensor Data Correlation & Interpretation (Automatic Data Classification)

- Features extraction and selection
- Principal Component Analysis (PCA) and factor analysis.
- Data projection and clustering (i.e., unsupervised classification)





MARKET OVERVIEW

Federico Pensa, CCO



MARKET OPPORTUNITY – STRONG AND EXPANDING DEMAND

AUTONOMOUS UNDERWATER VEHICLES (AUV) MARKET OUTLOOK

GLOBAL AUV MARKET CAGR 2023–2028: +22.4%

STRATEGIC FIT WITH GROWTH MARKETS

Rapid growth across all categories:

Large AUVs: +24.1% CAGR (2023–2028)

Medium AUVs: +20.8% CAGR

Shallow AUVs: +19.9% CAGR

Market size forecast to reach **USD 4.9 Bn by 2028**

Key driver: growing need for underwater exploration, defense, environmental monitoring, and energy infrastructure.

The Autonomous Underwater Vehicle (AUV) market is expected to **grow rapidly** across several key application areas from 2023 to 2028:

- *Archaeology & Exploration:* +26.9% CAGR
- *Search & Salvage Operations:* +23.9% CAGR
- *Environmental Protection & Monitoring:* +22.5% CAGR
- *Oceanography:* +22.8% CAGR
- *Defense & Military:* +20.1% CAGR

EdgeLab is **strongly positioned** across all these segments, thanks to its **advanced solutions** such as **U_Tracker®** and **U_Deep® AMOGH**, designed to meet the specific operational and technical needs of each domain.

Source: Markets & Markets – AUV Market Global Forecast 2028 – forecast 2023-2028.



AUV GLOBAL MARKET

AUV MARKET- CAGR 23-28 / COUNTRY



India = CAGR 27,0% (23-28)

Middle East = CAGR 24,6% (23-28)

Source: Markets & Markets – AUV Market Global Forecast 2028 – forecast 2023-2028.

STRONG POSITIONING IN A CONSOLIDATED MARKET

50% of AUV market held by 3 players: Kongsberg, Teledyne, General Dynamics



EdgeLab offers:

- Higher manoeuvrability (hovering + point rotation)
- Superior customization
- Highly competitive pricing

Positioned in the top-right quadrant:

- High operational flexibility, excellent quality/price ratio

U_Tracker is the only small AUV with ROV capability. U_Deep offers deep-sea, customizable performance at a better price than peers.

Source: Management



FY2025 FINANCIAL RESULTS

Stefano Bartelloni, *CFO*



KEY FINANCIAL HIGHLIGHTS – 2025

KEY RESULTS AS OF 31 DECEMBER 2025

VALUE OF PRODUCTION

2025: €1,39M
2024: €1,60M

EBITDA

2025: €-538K
2024: €4,1K

NET FINANCIAL POSITION

2025: €-2,2M
2024: €18,8K

EQUITY

2025: €3,50M
2024: €4,18M

NET RESULT

2025: €-681K
2024: €-1,1K

BACKLOG VISIBILITY

**ORDER BOOK STRENGTHENING,
WITH SIGNIFICANT CONVERSION
EXPECTED IN 2026**

INCOME STATEMENT

RECLASSIFIED INCOME STATEMENT

Reclassified Income Statement	31/12/2025	31/12/2024	Change
Revenues from sales	156.193	1.080.483	- 924.290
Change in inventories of WIP, semi-finished and finished goods	445.104	-	445.104
Other revenues and income	790.282	517.808	272.474
Value of production	1.391.579	1.598.291	- 206.712
Raw materials, supplies and goods (net of inventory variation)	- 390.197	- 148.297	241.900
Service costs	- 651.106	- 849.907	- 198.801
Costs for use of third-party assets	- 31.807	- 28.874	2.933
Personnel costs	- 748.015	- 553.398	194.617
Other operating costs	- 108.631	- 13.700	94.931
EBITDA (ii)	- 538.177	4.115	- 542.292
Depreciation and amortization	- 141.738	- 5.300	136.438
Provisions	-	-	-
EBIT (iii)	- 679.915	1.185	678.730
Financial income (expenses)	- 954	55	- 1.009
EBT	- 680.869	1.130	679.739
Taxes	-	-	-
Net result	- 680.869	1.130	679.739

- **Timing mismatch between production and invoicing** (increase in work in progress);
- **Higher direct costs** due to **intensified production activities**;
- **35% increase in personnel costs** to support future growth;
- **Commercial and organizational investments** consistent with the **Company's international positioning**;
- **General & administrative costs** still **significant despite a reduction vs prior year**;
- **Depreciation and amortization of intangible assets**, primarily **related to the capitalization of costs incurred for the listing process**.

All figures are expressed in €



BALANCE SHEET & NET INVESTED CAPITAL

RECLASSIFIED BALANCE SHEET

Reclassified Balance Sheet	31/12/2025	31/12/2024	Change
Credits to shareholders for payments due	-	3.498.625	- 3.498.625
Intangible fixed assets	558.248	669.107	- 110.859
Tangible fixed assets	18.144	13.721	4.423
Financial fixed assets	4.200	7.111	- 2.911
Net fixed assets	580.592	4.188.564	- 3.607.972
Inventories	482.958	-	482.958
Trade receivables	350.540	827.035	- 476.495
Trade payables	- 104.091	- 773.349	- 669.258
Commercial working capital	729.407	53.686	675.721
Other current assets	467.331	150.215	317.116
Other current liabilities	- 413.318	- 155.614	257.704
Net working capital (i)	783.420	48.287	735.133
Provision for risk and charges	-	-	-
Employee severance indemnities (TFR)	- 63.857	- 39.106	24.751
Net invested capital (ii)	1.300.154	4.197.745	- 2.897.591
Current financial debt	18.893	37.447	- 18.554
Current portion of non-current financial debt	-	-	-
Non-current financial debt	796	4.200	- 3.404
Total Financial Debt	19.689	41.647	- 21.958
Cash and cash equivalents	- 2.217.703	- 22.939	2.194.764
Other current financial assets	-	-	-
Net financial debt (iii)	- 2.198.013	18.708	- 2.216.721
Share capital	76.913	76.913	-
Reserves	4.102.123	4.103.254	- 1.131
Net income	- 680.869	- 1.130	679.739
Total equity	3.498.167	4.179.037	- 680.870
Total sources and equity	1.300.153	4.197.745	- 2.897.592

NET INVESTED CAPITAL

- **Sharp reduction in net fixed assets** (€4.2m → €0.6m)

Driven mainly by collection of receivables from shareholders for unpaid capital contributions, now converted into cash together with ordinary amortization.

- **Strong increase in commercial working capital** (€54k → €729k)

Reflecting higher operational activity and the build-up of receivables and inventories linked to ongoing projects.

- **Net working capital significantly increased** (€48k → €783k)

Driven by accounting effects related to tax credits and deferred income from the IPO tax credit, rather than underlying operating performance.

SOURCES AND EQUITY

- **Very limited financial debt** (~€20k)

The Company remains essentially unlevered.

- **Strong net cash position** (€2.2m positive NFP)

Confirms high liquidity and solid financial structure.

- **Equity decreased** (€4.18m → €3.50m)

Due to the net loss recorded in the year.

- **Overall structure remains solid** supporting future growth.

All figures are expressed in €



NET FINANCIAL POSITION ANALYSIS

NET FINANCIAL POSITION ANALYSIS

NET FINANCIAL POSITION	31/12/2025	31/12/2024	Change
A. Cash and cash equivalents	- 2.217.703	- 22.939	2.194.764
B. Cash equivalent instruments	-	-	-
C. Other current assets	-	-	-
D. Total liquidity (A) + (B) + (C)	- 2.217.703	- 22.939	2.194.764
E. Current financial debt	18.893	37.447	- 18.554
F. Current portion of non-current financial debt	-	-	-
G. Total current financial debt (E)+(F)	18.893	37.447	- 18.554
H. Net current financial debt (G)-(D)	- 2.198.810	14.508	- 2.213.318
I. Non-current financial debt	796	4.200	- 3.404
J. Debt instruments	-	-	-
K. Trade and other non-current payables	-	-	-
L. Total non-current financial debt (I)+(J)+(K)	796	4.200	- 3.404
M. Total Net Financial Debt (H)+(L)	- 2.198.013	18.708	- 2.216.721

VALUE OF PRODUCTION BREAKDOWN

Description	31/12/2025	31/12/2024	Change
Revenues from sales and services	156.193	1.080.483	- 924.290
Change in inventories of work in progress, semi-finished and finished goods	445.104		445.104
Other revenues and income*	790.282	517.808	272.474
Value of Production	1.391.579	1.598.291	- 206.712

*of which €724,454 relate to research and development funding grants

All figures are expressed in €



ECONOMIC TREND

- **Shift from R&D to industrial phase**

2025 marks the transition toward scalable production.

- **Cost structure strengthening**

Operational capacity expanded ahead of revenue conversion.

- **Temporary imbalance between costs and revenues**

Growth investments not yet fully reflected in the income statement.

- **Solid fundamentals for future performance**

Backlog and commercial pipeline support expected revenue acceleration.

The current performance reflects a structural transition, with economic results expected to improve as production converts into revenues, aligning with the increased operational capacity.

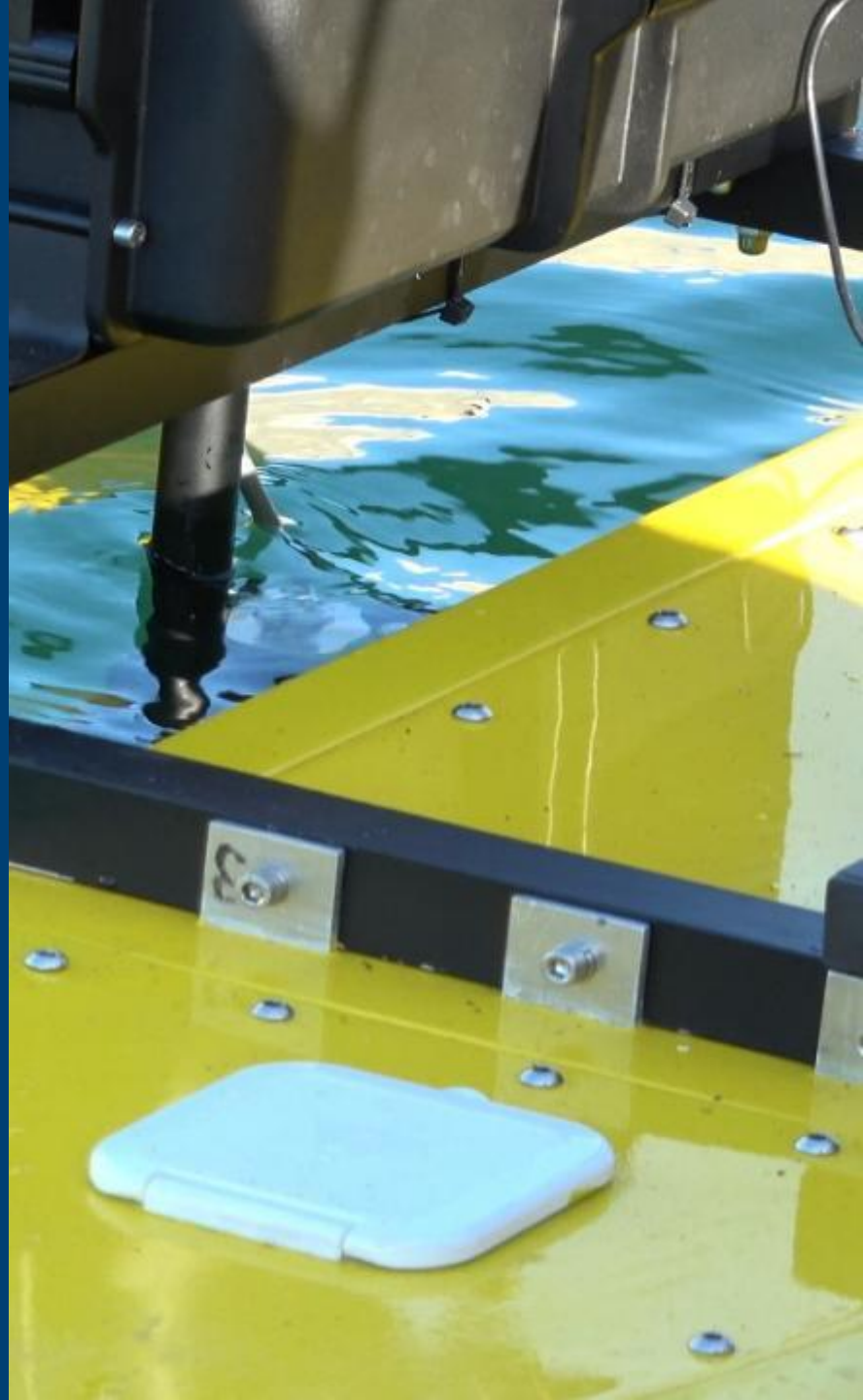




PERFORMANCE 2025 & 2026 STRATEGIC ROADMAP 2025 – 2026

Federico Pensa, *CCO*

Stefano Bartelloni, *CFO*



KEY ACHIEVEMENTS 2025

MAIN CORPORATE MILESTONES 2025

**JAN
2025**

Completion of the **LEVIATAD – AISI Consortium Grant (EU-funded)** | €10K for innovation and internationalisation in the defence sector.

**FEB
2025**

Approval of the **SHARK project** (Submarine High-Tech Autonomous Research Kraft) under the National Underwater Tech Hub (**PNS-2024-R-05**).

**MAR
2025**

Progress in **MTCOM, NAUTILOS**, and **THETIDA projects** under **EU** and regional **R&D programs**.

**APR
2025**

EUT – Expendable Underwater Target reached Milestone 10.

Official **delivery of the U_Tracker®** Autonomous Underwater Vehicle to the **Sicilian Region's Superintendency of the Sea**, following a dedicated two-day **training programme**, supporting marine heritage monitoring.

Start of small-series production of the autonomous underwater vehicle U-Tracker®.

**MAY
2025**

Received €724K in non-repayable grants from **PNRR and EU programs** (M.A.R.E., AUTOMA, LEVIATAD-RESILIENT MTCOM, NAUTILOS e THETIDA) supporting R&D and innovation.

MTE – Mobile Target Effector: final development phase ongoing.

KEY ACHIEVEMENTS 2025

KEY CORPORATE DEVELOPMENTS IN 2025

**AUG
2025**

Received authorization from the Italian Prime Minister's Office for a framework **cooperation agreement** with **Kalyani Strategic Systems Limited (KSSL)**, part of the **Bharat Forge Group** (India).

The agreement strengthens **international partnerships** and supports EdgeLab's global expansion in autonomous marine platforms and maritime security systems.

**SEPT
2025**

Achieved **ISO 9001 certification** for the company's Quality Management System, issued by MS CERT.

**NOV
2025**

Conclusion of M.A.R.E. project (PNRR)
→ advanced marine observation platforms.



KEY ACHIEVEMENTS 2026

MAIN CORPORATE DEVELOPMENTS IN 2026

Completion of AUTOMA project:
AI and AUV-based marine biodiversity monitoring.

MTCOM project reaches a key milestone: first **at-sea trials successfully conducted** to validate a 5G-based system for environmental and port monitoring.

Regulatory engagement under Golden Power framework, ensuring full compliance with authority requirements.

EdgeLab S.p.A. announces the signing of a **strategic agreement with Turrim Sp. z o.o.**, a Polish company specialising in commercial representation and business development.



CORPORATE STRATEGY AND FUTURE DIRECTION

- ✓ **Innovation as a Growth Driver**
The Company continues to invest in **cutting-edge R&D**, maintaining a distinctive technological footprint and developing advanced solutions aligned with the evolving needs of clients and stakeholders.
- ✓ **Product and Service Diversification**
Strategic efforts are focused on expanding and diversifying the Company's portfolio, addressing the growing demand in both **civil and defense sectors**, with scalable and sustainable technologies.
- ✓ **Resilience & Long-Term Value Creation**
With a robust pipeline and increasing visibility on future revenues, EdgeLab is well-positioned to **face future challenges**, create long-term value, and lead the transition toward a **smarter, safer, and more connected marine ecosystem**.



USE OF PROCEEDS 2025-2026

International Commercial Network Development

Further international expansion through agency agreements in:

- **Europe:** Poland, Greece, Romania, Spain, Portugal;
- **Asia:** India, Malaysia, Singapore, Vietnam, Cambodia, Bangladesh, Philippines, Turkey;
- **Latin America:** Mexico, Argentina, Uruguay, Colombia, Peru, Venezuela.

Organisational Strengthening

We have **increased our workforce by 20%** and anticipate a **further 30% growth by year-end**.

Extraordinary Transactions

Opportunity for growth also through external expansion, via the acquisition of target companies.

New Product Range

The Company further advanced its industrialization process, progressing toward the **ramp-up of the U-Tracker production line and the start of small-series production**, tailored to address different market segments and operational requirements: U-Tracker IV; U-Tracker Pro; U-Tracker L.

New Operational Premises

Search underway for **premises better suited to the production requirements and growth targets set out** in the industrial plan.





CONTACT

INVESTOR RELATIONS

ir@edgelab.eu

Tel: +39 0187914138